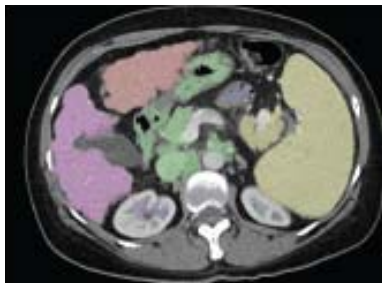
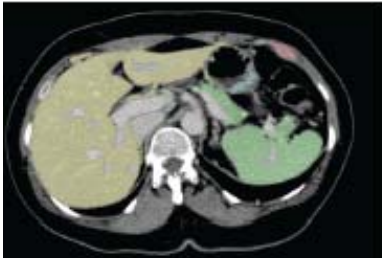


RadiPOP

Radiomics-based Prediction of Portal Pressure

A computer-implemented method for segmentation of medical imaging data



Feature extraction from CT, MRI and Xray

- Organ and structure differentiation
- Organ Volume
- Vascularization
- Vessel Diameter

Uses and applications

- Diagnosis portal hypertension, cirrhosis, planning surgical tasks

Assets

- Computational method for semi-automatic segmentation of medical imaging data
- Capable of segmenting liver from neighboring organs and other structures
- Uses: Diagnosis of portal hypertension, cirrhosis, planning surgical tasks

Competitive Advantage

- Low-user interaction
- Difficult segmentation tasks can be automated
- Rapid

Intellectual Property

- A computer-implemented method for semi-automatic segmentation of medical imaging data and interactive computer program for carrying out the same.
- EP priority application filed 2020

Ce-M-M

CeMM is an interdisciplinary research institute of the Austrian Academy of Sciences committed to advancing the understanding of human diseases through basic and biomedical research and is located on the Medical University of Vienna campus.